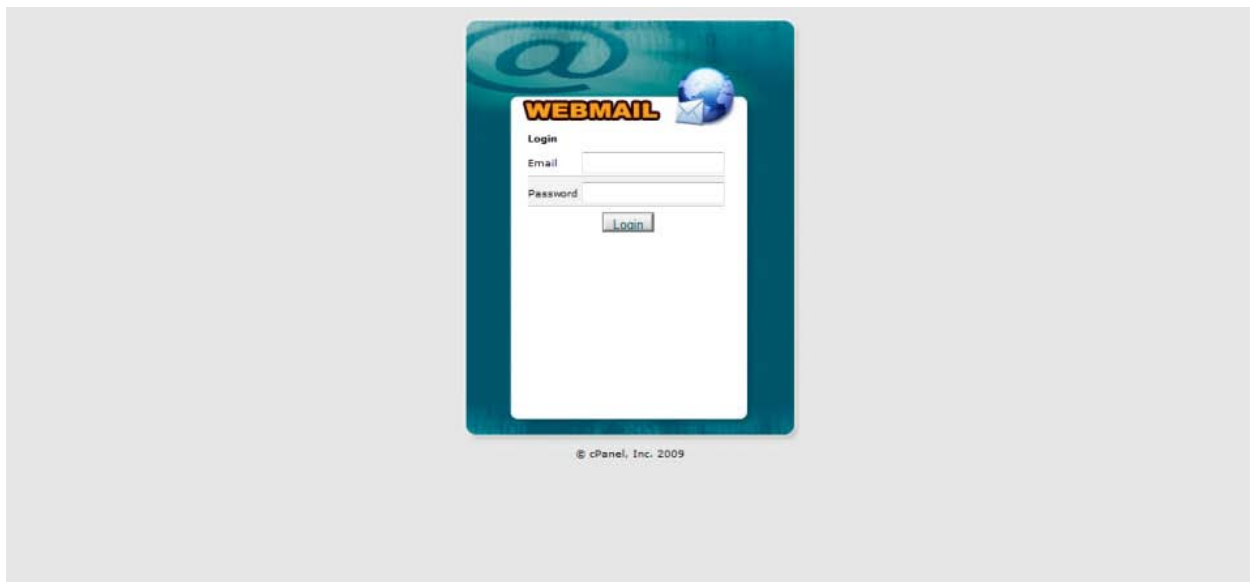


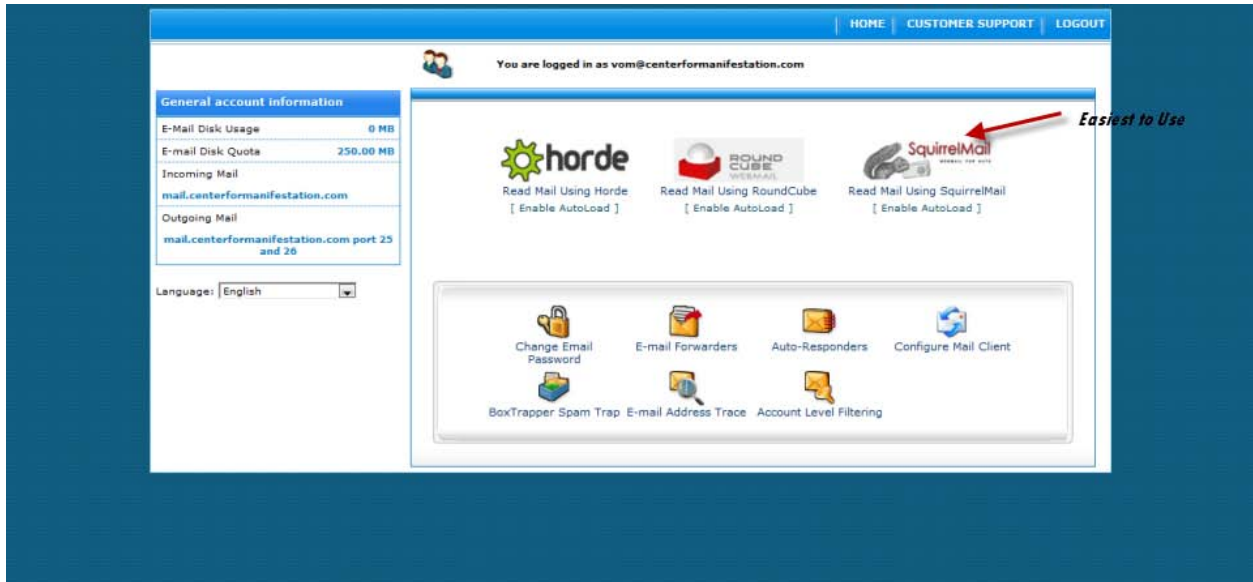
You can log into your CFM email at the church's website by visiting the link in the upper right hand corner labeled **webmail**.



Upon clicking on the link, you will be directed to a log in page. Here you will enter the email address and password you were provided.



After logging in, you will land on the email control panel. Here you can do such things as change your password, forward your emails, but more importantly check your mail. You have 3 email clients to choose from in order to access your email, the simplest to use is **SquirrelMail**.



After clicking on the **SquirrelMail** link, the **SquirrelMail** email client will load and you will be automatically directed to your inbox to view any previous or new email messages that you have.

